

An abstract graphic of a circuit board with various lines and dots in shades of green and teal, extending across the top half of the page.

CASE STUDY **DATA EXCHANGE *Workflow***

for a Leading Telecom Client

REGARDING DATA EXCHANGE WE ARE OFTEN ASKED...

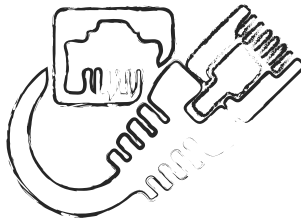
- How do I get my data?
- What kind of data will I receive?
- Who generates data?
- Where is data generated or transferred?
- When will I receive my data?



THE DATA CONNECTION

1. DATA CONNECTION OPTIONS

- A:** Direct connection to system
- B:** Data transfer by e-mail in Excel or CSV format
- C:** Online data visualization via ‚ITC-Webborder‘



RECEIPT OF GOODS

2.1 NON-PHYSICAL GOODS RECEIPTS BY CUSTOMER

- A:** Through data transmission via interface
- B:** Through written notification of the planned goods receipts

A written confirmation is sent via email in Excel, CSV, or your preferred format

2.2 DATA ENTRY OF PHYSICAL GOODS RECEIPT

- Order data is transferred to the warehouse management and ITC inventory management system
- Item entry may include batch number and best-before date, depending on the product
- Plausibility check
- Stock target and actual values are transmitted via interface

2.3 TAKING IN CHARGE OF GOODS INCL. LABELING AND STORAGE

- Goods intake is managed through labeling and scanning using wireless terminals
- The goods are stored with the help of the forklift guidance system, which is integrated in the WOS system. The wireless terminal guides the forklift driver to the storage bin or withdrawal point

2.4 INVENTORY MANAGEMENT

- Inventory is automatically updated, as all storage and withdrawals are performed using scanners



2.5 WAREHOUSE VISUALIZATION

- Visual overview of the entire warehouse, including equipment storage locations



THE ORDER

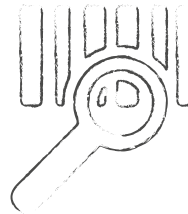
3. OPTIONS FOR PLACING YOUR ORDER

- A: Via the interface
- B: Manually/In writing
- C: Via ITC Weborder

GOODS DISPATCH

4.1 DATA FLOW DURING ORDER PICKING

- Picking order is automatically generated via wireless terminal and accounts for the batches etc. selected in the MMS
- The system sorts orders by availability, priorities, and shipping type
- Orders are grouped into order picking packages according to their delivery date and the departure times for the various delivery areas
- After goods receipt, all order data is immediately transmitted to the forklift driver, who recognizes the orders via the wireless terminal and takes them to the picking station
- After each completed replenishment, the system checks for pending picking orders and identifies required goods



4.2 VALIDATION STEP (CONFIRMED BY SCAN)

1. The correct withdrawal point
2. Withdrawal of the correct item
3. Withdrawal of the correct quantity

4.3 STATUS UPDATE AFTER PICKING HAS BEEN COMPLETED

A: Via interface **B:** By mail

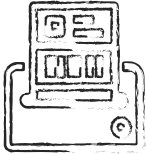
Content: • Items • Quantities and batches • Quantity boxes/pallets

SHIPPING

5.1 TRANSMISSION OF THE DELIVERY NOTE

A: Via interface **B:** By email

- Detailed list of all items in the customer's order
- List of order items with assigned pallets
- Optional direct shipping to the recipient

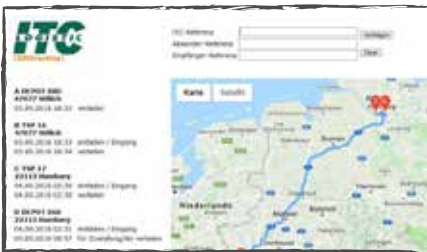


5.2 SHIPPING LABEL

- The delivery note and shipping label are printed automatically
- An automated update is sent to the customer

5.3 SHIPMENT HANDOVER

- Goods are transferred from the ITC Merchandise Management System to the ITC Warehouse Operation System via interface
- The data is made available to all transport systems



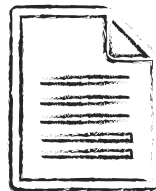
5.4 DISPATCH NOTIFICATION INCLUDING TRACKING LINK

- Via e-mail
- Upon request sent directly to recipient
- Visual tracking, including transshipment points and anomaly reports

THE REPORT

6.1 TRANSMISSION

A: Automatic **B:** Upon request



6.2 MOVEMENT AND PERFORMANCE REPORT

- Complete history of item movements (inbound/outbound)
- Summary for a defined time period



ITC Logistic Ges. mbH
Linsellesstraße 97
47877 Willich-Schiefbahn
www.itc-logistic.com



Your contacts:

Ulrich Kerksiek
Head of Sales
+49 2154 815 - 628
uk@itc-logistic.com

Dennis Latham
Head of Logistics
+49 2154 815 - 790
dl@itc-logistic.com